

McMENAMINS
KALAMA
HARBOR
LODGE



215 Hendrickson Dr.
Kalama, WA 98625
Group Sales: (360) 673-9201

mcmenamins.com

August 2023



INTRODUCTION & HISTORY

Welcome to McMenamins Kalama Harbor Lodge, a tropics-inspired oasis along the Columbia River nestled between the city's landmark totem poles and the marina at the Port of Kalama. We're a 40-minute drive north from Portland and about 2 hours south of Seattle.

Inspired by the Native Chinook and Cowlitz people of the region and by the Hawaiian heritage of John Kalama, the structure is reminiscent of Maui's Pioneer Inn that stood from 1901 until being burned by wildfire in 2023, while original art and historical photos pay tribute to Northwest heritage. You and your guests are sure to relax into an island vibe while taking in the beauty of the Pacific Northwest.

McMenamins celebrates the community and magnificent Columbia River setting through artwork and visual surprises. In the main lodge, the event space is named Old 97 for the railroad switch engine that was used in the late 1800s to disassemble and reassemble train cars on the massive transfer ferry that crossed the Columbia at Kalama. 40 island-inspired guestrooms have en suite bathrooms and individual lanais, most with a view of the river. The rooftop Cloud Bar is a great spot to enjoy a handcrafted beverage, and breakfast, lunch and dinner are served in the pub or on the wraparound patio.

Just upriver, the Cove Bar and event spaces are steeped in the 1989 Merriweather Post Pavilion performance of the Jerry Garcia Band, without forgetting Kalama Harbor Lodge's local and Hawaiian roots.

Contact our Sales Coordinators at (360) 673-9201 to book McMenamins Kalama Harbor Lodge for your next meeting, event or celebration.



FACTS & FIGURES

LOCATION

Forty miles north of Portland, Oregon, and 136 miles south of Seattle, Washington, on the banks of the Columbia River.

DRIVING DIRECTIONS

From Portland: Take Interstate 5 north to exit 27 to Hendrickson Drive.

From Tacoma/Seattle: Take Interstate 5 south to exit 30 to Hendrickson Drive.

LODGING

Forty island-inspired guestrooms have en suite bathrooms and individual lanais, most with a view of the river.

CONFERENCE & EVENT FACILITIES

In the main lodge, Old 97 accommodates up to 100 people and can be divided into two rooms. The Cove event spaces are close to the marina with adjacent parking. There are three main meeting rooms with varying capacities, each with A/V equipment and views of river or harbor. The two west-facing rooms have access to lanais, and the Westin Amphitheater is just a short walk away with free live music in the summertime.

NON-SMOKING POLICY

McMenamins Kalama Harbor Lodge does not allow smoking anywhere on the property, including the patios and lanais.

LOCAL ATTRACTIONS

- Port of Kalama Marine Park & Louis Rasmussen Day Park, adjacent to the property
- Westin Amphitheater in Marine Park
- Port of Kalama Transportation Interpretive Center, next door to the property
- Fishing and boating on the Columbia River
- River Ranch Charters, sightseeing river cruises located at the Port of Kalama
- Three Rivers Golf Course, Kelso, 12.5 miles north
- Tri Mountain Golf Course, Woodland, 16.3 miles south
- Cowlitz County Historical Museum, Kelso, 10.7 miles north
- Mt St Helens Visitor Center, Castle Rock, 25 miles north
- Ilani Casino, Ridgefield, 13 miles south



HARBOR LODGE ATTRACTIONS

PUB

We invite you in for breakfast, lunch or dinner in the pub or on the wraparound patio where menus include specialties with a Hawaiian twist, as well as McMenamins favorites, such as burgers, pizza and salads.

HARBOR LOUNGE

Relax with a McMenamins handcrafted beer, cider, wine, spirit or coffee while you check out the Tongan canoe and Polynesian artifacts. And enjoy free live music weekly.

CLOUD BAR

Come for the bird's-eye view of the Columbia River and stay for the signature tropical drinks: the Three Rocks Rum Daiquiri and the Mai Tai – or a fresh beer from the onsite brewery. Watch the boats come and go, handcrafted refresher in hand.

AHLES POINT CABIN

Meander along the path that leads from the hotel past the totem poles and Louis Rasmussen Day Park to Ahles Point, where you'll find a small log-cabin built by Kalama's Mountain Log Homes. The Cabin has fireplaces inside and out, with a patio and views of the Columbia River.

COVE BAR & EVENT SPACES

Inspired by the legendary Merriweather Post Pavilion performance of the Jerry Garcia Band in September 1989, artwork anchors this building to its perch on the banks of the Columbia River, while a patio, views and games provide entertainment for all. Three private rental spaces populate the upstairs, and a bar and game rooms fill the ground floor.

The Cove Bar itself may put you in thrall of tales of local lumberjacks and seafaring nomads: found objects, bamboo walls and artisans' handiwork send you on journeys downriver, but don't let the siren's song distract you from an El Diablo cocktail or Tres Tacos.

BREWERY

Peek through the windows in the lobby to discover a brewery that utilizes a 7-barrel brew system with modern conical fermenters. This brewery is equipped with two brite tanks that assist in the maturation and clarifying process, a welcome addition in the modern production of craft beer. You'll also spot our onion-domed, copper-covered brew kettle, manufactured by Pioneer Tank & Vessel in Portland; this component is a first for McMenamins and, as far as we know, a first in the Pacific Northwest.

HARBOR LODGE MARKET

Taste what's on tap in the Market, then sip a pint while you shop, or fill a growler to go; our taps include McMenamins cider, seasonal & standard beers and coffee on nitro. Or enjoy drinks from the espresso bar, where there are also fresh pastries made daily.

Take home an old favorite or discover something new from the multiple coolers filled with beer and cider to go. Gear up with McMenamins T-shirts, hoodies, bar accessories, drinkware and gifts. Headed to the park and port? We've got swimsuits, kites, Frisbees and snacks to go.



CATERING SUGGESTIONS

We use fresh, local ingredients and offer house made desserts – not to mention McMenamins handcrafted beers, wine, cider, spirits and coffee.

Browse our banquet offerings to get a sense of the island inspiration of Kalama Harbor Lodge. You could select the North Shore Buffet with Island Slaw, Three Rocks Jerk Chicken, Coconut Shrimp and Banana Bread Pudding. And add the Tiki Pupu Party menu with Year of the Dragon Pork Sliders and Egg Rolls as a pre- or post-event snack. These are just a few of our unique menu items, with many more from which to choose.

It's best to order enough of each item so everyone can sample. For stand-up receptions, we recommend foods that can be eaten without a silverware.

For events, we suggest:

- Light hors d'oeuvres, (before dinner): 3-5 items per person
- Afternoon reception (3-5pm): 7-10 items per person
- Evening reception (5-8pm): 12-14 items per person
- Popular selections for parties include Crab Cakes, Hazelnut-Crusted Brie and Spicy Tuna Tartare.

Not sure what to choose? We've got you covered with five Reception Packages. Food will be kept fresh and available for up to two hours.

For main meals, explore our Buffet Enhancements section and put your touch on the delicious offerings.



BOOKING INFORMATION & SITE PLAN

Food and beverage are provided by our onsite catering department.

Minimum food and beverage purchases apply to each room, varying based on the size of the room, time of day and day of the week.

There is no additional room rental fee once the food and beverage minimum is reached.

Each function requires an advance deposit with the balance due upon conclusion of the event.

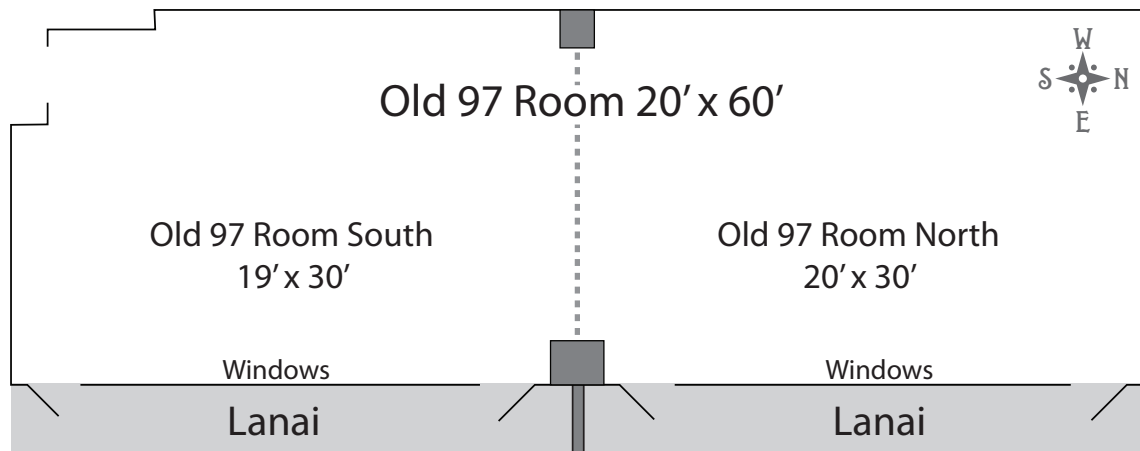
Direct billing is also available for corporate events with advance arrangements.

Meeting and event spaces are reserved through our sales staff.

For more information, please contact our Sales Coordinators at (360) 673-9201.

MAIN LODGE: OLD 97 EVENT ROOM SPECIFICATIONS

Maximum number of guests per set-up style:							
	Size	Sq Ft	Buffet/ Banquet	Reception	Classroom	Theater	Conference
Old 97 Room North	20' x 30'	600	40	49	28	48	24
Old 97 Room South	19' x 30'	580	40	45	28	44	24
Old 97 Room	20' x 60'	1200	81/63	100	60	90	5

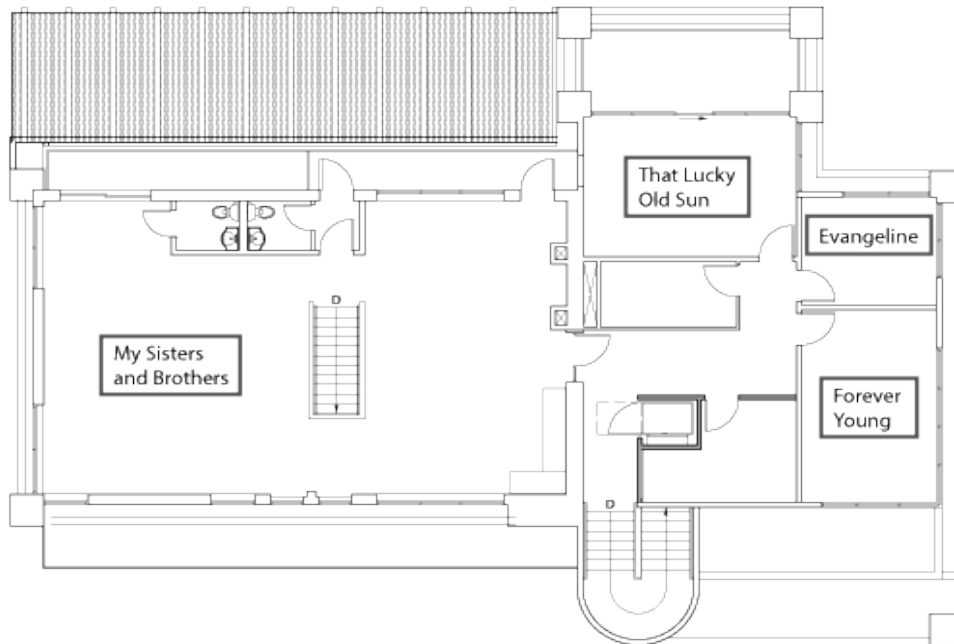




BOOKING INFORMATION & SITE PLAN

KALAMA COVE EVENT ROOM SPECIFICATIONS

Maximum number of guests per set-up style:								
	Size	Sq Ft	Buffet/ Banquet	Reception	Classroom	Theater	Conference	
My Sisters and Brothers	28' x 55'	1450	80	100	42	80	20	
That Lucky Old Sun	19' x 14'	266	-	-	-	-	12	
Forever Young	12' x 18'	216	-	-	-	-	10	
Evangeline	10' x 20'	120	<i>available for overflow only</i>					



ROOM FEATURES:

Our event rooms are named after songs played at the epic September 1989 Jerry Garcia Band show, and the music is reflected in the art in each room.

My Sisters and Brothers includes screen and projector. Windows on three sides overlook the Columbia River, the Kalama Harbor and southern views toward the main lodge. Balcony access.

That Lucky Old Sun includes screen and projector, conference tables and chairs, patio. Windows on north and west overlook the Columbia River.

Forever Young includes screen and projector, conference table and chairs. Windows on north and east overlook Kalama Harbor.

Evangeline is available for overflow with rental of any of the other three rooms.