



McMENAMINS GRAND LODGE

FOREST GROVE, OR



INTRODUCTION & HISTORY



McMenamins Grand Lodge is set in Forest Grove on 13 acres of beautiful gardens and sweeping lawns that surround this majestic architecture, originally built as a Masonic Lodge. Welcoming gathering spaces abound, including sunny parlor rooms and a cottage full of charming meeting rooms, accompanied by lush outdoor spaces extending the possibilities. The Grand Lodge is an ideal place for all types of events, from outdoor weddings to company meetings to family reunions and more.

The grandeur that you see today was founded in 1922 as one of the Masonic Lodges of Oregon. It is an impressive structure with Ionic columns, marble accents and French doors opening into gathering spaces filled with natural light, along with hardwood floors and cozy fireplaces.

A variety of interesting characters once called the place home—Alice Meek Inkley, granddaughter of some of the first Oregon pioneers; WWII photographer Paul Shrock; and jeweler/wind chime craftsman Edwin Fish, to name just a few.

When the Masonic and Eastern Star Home relocated to a new facility in 1999, McMenamins leapt at the opportunity to infuse its lyrical sense into the Masons' historic tradition. The buildings were given a creative and respectful renovation that enhanced their classic, original features and added some fun new twists. Today, visitors to McMenamins Grand Lodge are offered a bounty of ways to relax, congregate, reinvigorate or celebrate, depending on the need and desire. Groups can gather in one of the well-equipped meeting spaces or smaller groups may choose to dine in the Ironwork Grill or Pat's Corner where locally and seasonally inspired menus and daily specials are available.

Events can also be catered outdoors.

Before retiring to one of 90 comfortably furnished guestrooms, we encourage all visitors to explore the property's multitude of walks, nooks, snugs and other diversions:

a warm dip in the soaking pool, a game of pool in the Doctor's Office,

a movie in our newly renovated theater, or a stroll around the grounds.

Or, you may just want to curl up with a book and a nightcap in one of the sun parlors, surf the web using our free WiFi or perhaps peruse the artwork and historical photos on display throughout the hallways.



FACTS & FIGURES



LOCATION

The Grand Lodge is in Forest Grove, approximately 20 miles west of downtown Portland at the intersection of Pacific Avenue (Highway 8/Tualatin Valley Highway) and Quince Street (Highway 47).

DIRECTIONS

FROM PORTLAND

- Take US-26 west to North Plains Exit 57.
- Following the signs to Forest Grove, turn left (south) onto Glencoe Road.
- Follow Glencoe Road to the intersection of Zion Church Road (second light) and turn right. Zion Church Road becomes Cornelius-Schefflin Road.
- At the first traffic circle, follow the sign to Verboort Road.
- At the next traffic circle, follow the sign to Martin Street.
- Follow to stop sign and turn left onto Highway 47/Quince Street.
- Turn right into the second driveway after the railroad tracks.

FROM HILLSBORO

- Take Tualatin Valley Highway (Highway 8) west.
- In Forest Grove, Tualatin Valley becomes Pacific Avenue.
- McMenamins Grand Lodge is located at the intersection of Pacific Ave. and Quince St.



FACTS & FIGURES



ACCOMMODATIONS

Classic ambiance graces all of the 90 guest rooms at the Grand Lodge, each of which is named for one of the colorful and often whimsical characters who have notable associations with the hotel or the surrounding community. Guests may choose from rooms with private baths or convenient shared common bathrooms down the hall. For special occasions, we now offer over 40 rooms with ensuite baths, and our Grand suite is equipped with a private bath, separate lounge and fireplace is also available. Conveniences such as telephones and free WiFi are standard amenities. All rooms feature fine wood furnishings and cotton bathrobes.

Rooms vary from bunk beds to a king suite.

Call (503) 992-9533 or (877) 992-9533 for information and reservations.

Or visit us online at mcmenamins.com.

CONFERENCE FACILITIES

A variety of meeting and event spaces are found in the property's two main buildings, each of which is fully equipped for business or social gatherings. LCD projectors, televisions, flip charts, display boards and other audiovisual materials are available upon request.

WIFI

We are pleased to offer complimentary wireless Internet access for laptop users within the Main Lodge and the Children's Cottage, as well as Pat's Corner.

SMOKING POLICY

Smoking is permitted outdoors and in designated areas only.

LOCAL ATTRACTIONS

Wine tasting and tours	Fernhill Wetlands	Pumpkin Ridge Golf Course
Tree to Tree Adventure Park	Cycling	The Reserve Golf Course
Pacific University	Antiquing	Quail Valley Golf Course
Henry Hagg Lake for fishing, boating, hiking and disc golf		



GRAND LODGE EVENT SPACES



ALICE MEEK INKLEY ROOM

This space has an abundance of colorful character, just like its namesake. Alice Meek Inkley came to live at the former home in the late 1980s. She was the granddaughter of one of Oregon's founding fathers, Joe Meek, who settled on land near Forest Grove in 1840. The room's distinctive artwork and spacious quarters reflect the playful spirit and love of open spaces that were characteristic of Alice and her grandfather.

Capacity is 60 people.

EQUINOX ROOM

This room was named for one of jazz saxophonist John Coltrane's lesser-known masterpieces. It is one of the Grand Lodge's four original and glorious bow-windowed sun parlors, ideal for daytime gatherings. At night the Equinox Room is reminiscent of an intimate jazz den with its casual furniture, fireplace, full bar and mellow jazz compositions for ambiance.

Capacity is 30 people.

ROUNDER ROOM

Celebrating the musical and intellectual flavor of a late-1950s Greenwich Village coffee house, the Rounder Room is a convivial gathering spot. It is named for a band of "outlaw folkies," the Holy Modal Rounders, who set out in New York City during the early 1960s to stand traditional folk music on its ear. Their odyssey brought them west to Portland in the '70s and continues unfettered on both coasts today. The Rounder Room features comfortable chairs and couches, a beautiful fireplace and bowed windows with garden views.

Capacity is 30 people.

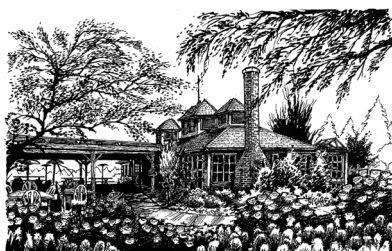
MAGIC FLUTE ROOM

In 1791, the opera entitled "The Magic Flute" was composed by one of history's more notable Masons, Wolfgang Amadeus Mozart. Legend has it that Mozart included top-secret Masonic lore in this musical drama. The passion and the drama of his music translates to this magical space, one of the building's majestic sun parlors. Garden and sunset views, a fireplace, full bar and classical music make the Magic Flute Room a perfect gathering spot.

Capacity is 24 people.



GRAND LODGE EVENT SPACES



CHILDREN'S COTTAGE

This wonderful, brick-and-columned edifice is the smaller and younger of the property's two original buildings. Completed in 1926, it was constructed to house orphans from the area's Masonic families. After five years, the Home decided their experiment of mixing the young with the elderly residents was a failure, and the children were relocated to private outside households. The Cottage then became a residential and administrative annex for the Home until 1970 when the offices of the Oregon Masonic Grand Lodge took occupancy. Today, the Cottage is home to three welcoming meeting spaces, Pauline's Room, Leah's Room and Priscilla's Room. Guests also have the option of renting the entire Cottage along with the yard.
Capacity is 180 people.

*PAULINE'S ROOM

This second-floor space overlooks the gardens and grounds where Pauline used to play. She came with her sisters to live at the Cottage in the late '20s, and they were among the last of the orphans to leave in 1931. Originally the girls' dormitory, Pauline's Room is a bright space for meetings and events of all kinds. This room includes the intriguing Safe Bar, which was once part of a two-story vault built by the Masons.
Capacity is 50 people.

*LEAH'S ROOM

Leah's Room is on the second floor at the opposite end of the Cottage from Pauline's Room in what once was the boys' dormitory. The space is very similar to Pauline's Room, which is appropriate since Leah and Pauline were two of four sisters who came to live at the Home.
Capacity is 50 people.

*PRISCILLA'S ROOM

On the first floor, Priscilla's Room features a stately and warming fireplace and charming view of the gardens. Priscilla was another of the sisters who lived together with the other orphans in the Cottage until 1931. This airy room was originally the library for the orphanage and undoubtedly the scene of more than a few stolen kisses.
Capacity is 80 people.



GRAND LODGE EVENT SPACES



OUTDOOR SPACES

We offer a selection of outdoor spaces that are alive with trees, flowers and other flora. These idyllic spaces are perfect for gatherings both big and small. Canopies or tents are highly recommended in case of inclement weather.

CATCHING'S GROVE & IRONWORK PATIO

This popular space is both pretty and practical — you'll have the patio just outside the Ironwork Grill that is covered by a wooden trellis overhead for those guests who wish to sit, along with a secret clearing bordered by flowering trees next to the main lodge.

Capacity is 100 people.

SEQUOIA GROVE

In this charmingly misnamed spot, three ancient redwoods stand tall over your occasion, lending an air of stately elegance. This spot can be sold as a package along with the Children's Cottage.

Capacity is 100 people.

HAYNE'S GLEN

Named for Civil War vet Harry Haynes who owned a farm east of the Masonic home, the clearing borders the beautiful outdoor soaking pool and looks out over the 10th hole on the disc golf course. This area can be sold as a package along with the Alice Inkley Room.

Capacity is 80 people.



HISTORY



- 6000 B.C. The Atfalati (from which the modern derivation Tualatin originates) are the first people to live in the vicinity of the McMenamins Grand Lodge site, arriving some 8,000 years ago and establishing seasonal villages and campsites.
- 1841: Retired fur trappers, including Joe Meek, settle on nearby lands of the fertile Tualatin Valley
- 1849: The school now known as Pacific University is established at West Tuality, since renamed Forest Grove.
- 1897: The Masonic Grand Chapter of Oregon adopts a recommendation “that steps be taken to establish a home for widows and orphans of Masons.”
- 1917: After 20 years of planning and fund raising, the Grand Lodge & Grand Chapter adopts resolutions declaring for the establishment of a Masonic and Eastern Star Home in the State of Oregon “for the aged and infirm, and the poor and distressed worthy Master Masons, their widows and orphans . . .” At the time, there were approximately 30 such Masonic Homes operating in 29 states. A 30-acre site east of Forest Grove is acquired for Oregon’s Masonic Home.
- 1920: The first contract for construction is let on May 2, and the cornerstone is laid on June 16. Plans are implemented to include an on-site farm operation to supplement the Home’s food needs.
- 1922: The main lodge’s central and east wings are completed January 1 at a cost of \$226,000. The first resident, Brother Henry Mounts, moves in on February 24.
- Qualifications for admission to the Masonic & Eastern Star Home of Oregon:
- a. Physically unable to make a living
 - b. In destitute circumstances
 - c. Without relatives who are able to support them
 - d. Of good character
 - e. Free from mental, infectious or contagious diseases
 - f. Of temperate habits and not addicted to the excessive use of liquors or narcotics
- 1926: An orphanage called the “Children’s Cottage” is completed on site at a cost of \$33,572 (furnished). Capacity of the new facility is 32 children.
- 1927: It is decided that the orphanage be closed due to strained relations between the elderly and children. Over the subsequent few years, the children are relocated to outside families.
- 1934: Focus of the Home shifts to caring for the sick and infirm. The average attendance over the past year is 92 residents, the largest number to date.
- Mid-1980s: Alice Meek Inkley, granddaughter of local pioneer Joe Meek, comes to live at the Masonic Home.
- 1999: The Masons build new facilities on the north half of the property and sell the old home to McMenamins.
- March 2000: McMenamins Grand Lodge opens.



BOOKING INFORMATION



Meeting and event spaces are reserved through our Sales & Events Department. Food and beverages are catered by our on site restaurant. Minimum food and beverage purchases apply to each room, varying on the size of the room, time of day and day of the week. Each function requires an advance deposit with the balance due upon conclusion of the event.

A direct billing option is available for corporate groups with advance arrangements.

Fully equipped rooms for business or social meetings are one of our hotel's highlights.

LCD projectors, flip charts, display boards and other materials are available upon request.

We offer free wireless Internet access throughout the property. The hotel's catering department offers special menus for all events, from conferences to wedding receptions and more.

For more information, contact our sales coordinators: (503) 992-9530 or (877) 992-9530

MEETING ROOM SPECIFICATIONS

	Maximum Number of Guests per Set-up Style				
	Rounds	Reception	Classroom	Theater	Square
Alice Meek Inkley Room	40	60	30	60	24
Equinox Room	NA	30	20	NA	16
Magic Flute Room	NA	30	20	NA	16
Rounder Room	NA	30	20	NA	16
Entire Cottage*	150	180	NA	NA	NA
(*includes lawn and Sequoia Grove)					
Priscilla's Room	50	80	40	60	40
Leah's Room	50	50	30	60	24
Pauline's Room	50	50	30	60	24
Catchings Grove	80	100	NA	100	NA
Sequoia Grove	80	120	NA	100	NA
Hayne's Glen	72	80	NA	80	NA

Please note that no group is too large to consider.
Speak with a sales coordinator if you have questions about capacity.



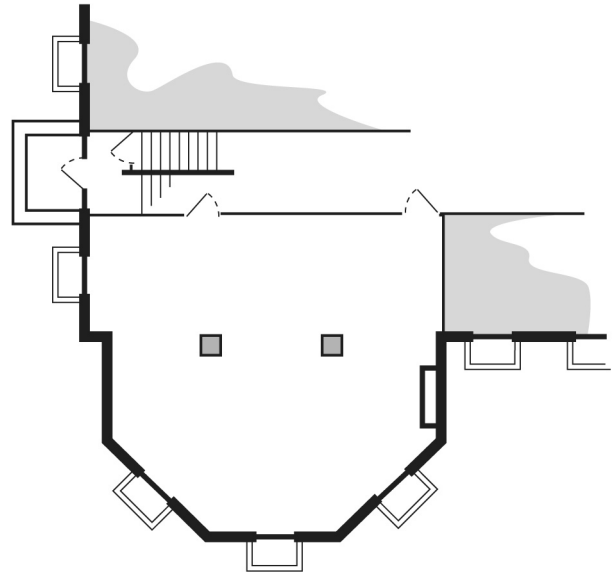
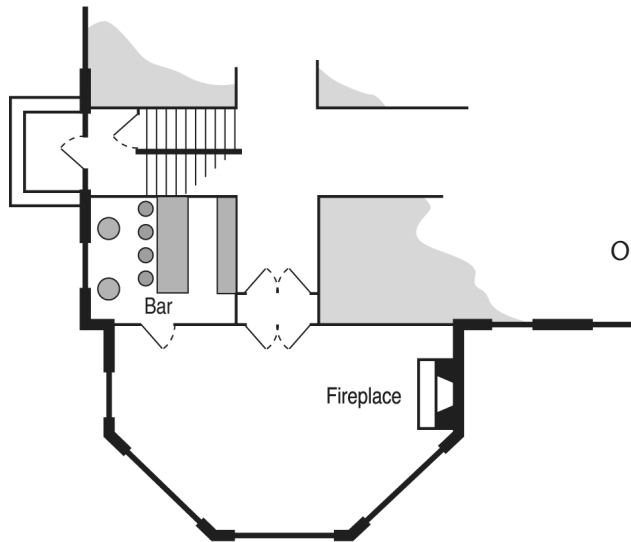
MAIN BUILDING



ALICE MEEK INKLEY ROOM

(FOUNDATION LEVEL)

This expansive space is one of the Grand Lodge's larger and most versatile meeting rooms. Its size and open floor plan welcome events of all kinds. Capacity is 60 people.



EQUINOX ROOM

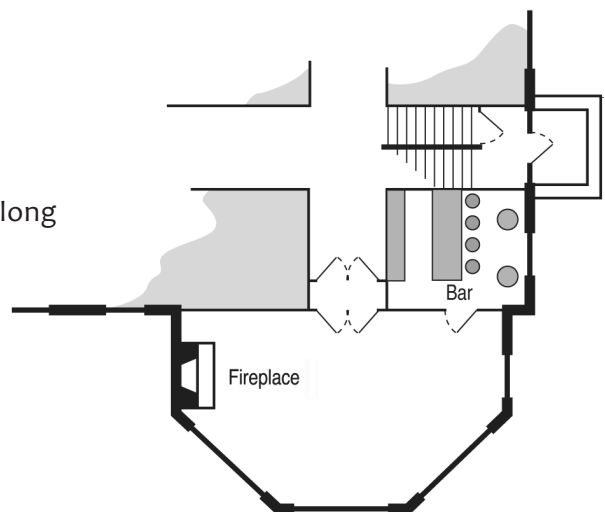
(FIRST FLOOR WEST)

One of the Grand Lodge's original sun parlors, the Equinox Room is a bright space that features a beautiful fireplace, hardwood floors and a full-service bar. Capacity is 30 people.

ROUNDER ROOM

(FIRST FLOOR EAST)

This spot offers comfortable chairs and couches along with a vintage fireplace and a view of the gardens through the bow window. Capacity is 30 people.



MAIN BUILDING



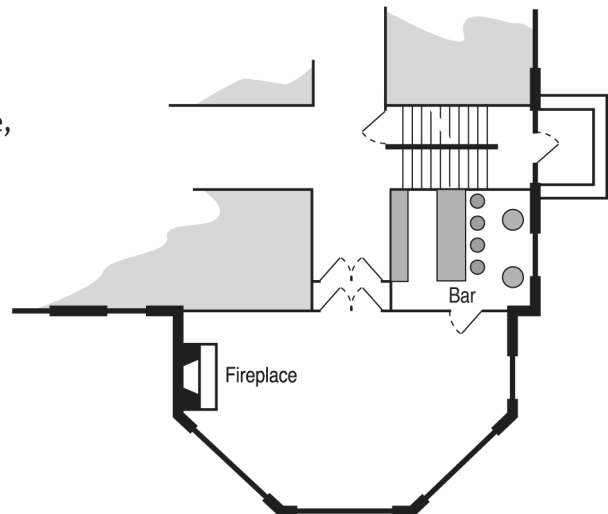
MAGIC FLUTE ROOM

(SECOND FLOOR EAST)

Another of the building's original sun parlors, the Magic Flute Room features a vintage fireplace, full-service bar and hardwood floors.

Its bank of oversized windows looks out onto the gardens.

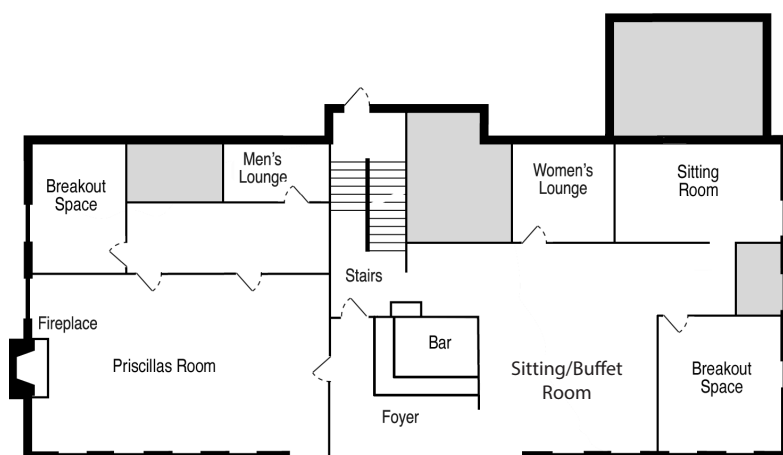
Capacity is 30 people.



CHILDREN'S COTTAGE

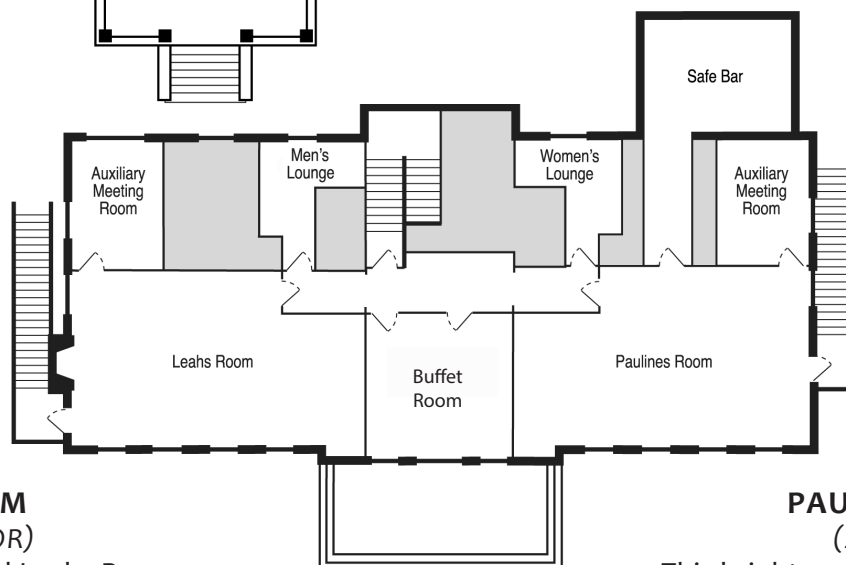


The former orphanage holds a variety of welcoming spaces for your event. You can request just one of the rooms for smaller groups or rent the entire Cottage including its lawn and the Cedar Grove for larger groups (up to 150 people). The Cottage itself functions well for weddings as there are small side rooms perfect for serving as the bride and groom's dressing areas.



PRISCILLA'S ROOM (FIRST FLOOR)

This is a bright, open space featuring an original fireplace and large windows looking out onto the beautiful grounds. Capacity is 25-80 people.



LEAH'S ROOM (SECOND FLOOR)

Groups will find Leah's Room a comfortable meeting place. With an open floor plan and a second-floor view of the gardens, this room is very accommodating. Capacity is 25-50 people.

PAULINE'S ROOM (SECOND FLOOR)

This bright, second-floor space and open floor plan will suit a multitude of meeting and event needs. Capacity is 25-50 people.



OUTDOOR SPACES



From secret clearings nestled in among the greenery to an intimate tree-lined grove with a quaint cottage the Grand Lodge offers a selection of lovely outdoor spaces for your event. Your guests will enjoy fresh air and beautiful views of the estate. Canopies and tents are highly recommended in case of inclement weather.

