

ANDERSON SCHOOL EVENT SPACES

HAYNES' HALL

Booked in conjunction with Haynes' Square from June 1 - October 15

Indoor/Outdoor Venue

Capacity up to 600 guests

PATTY MURRAY ROOM

Access to outdoor deck

Capacity up to 40 guests

ANDY'S ROOM

Couches and a large table, access to outdoor deck

Capacity up to 25 guests

ERMA OLIN ROOM

Pub-style seating

*Capacity up to 20 guests**

** Not available Friday or Saturday night*

WEGNER'S GARDEN

Outdoor venue available June 1 - October 15

Capacity up to 100 guests

THORNDIKE COMMUNITY ROOM

Must be a Bothell resident to book this room

Booking through the City of Bothell at (425) 806-6760

Full information and reservation form available at mcmenamins.com

Onsite catering through McMenamins

Capacity up to 35 guests

BOOKING INFORMATION

Meeting and event spaces are reserved through our sales staff. Food and beverages are provided by our onsite catering department. Minimum food and beverage purchases apply to each event space, varying on the size of the room, time of day and day of the week. Each function requires an advance deposit with the balance due upon conclusion of the event. Direct billing option is available for corporate events with advance arrangements.

Rooms are fully equipped for business meetings, social events and weddings, including WiFi. LCD projectors, flip charts and other materials are available upon request.

For more information, contact our sales staff:
(425) 398-0127

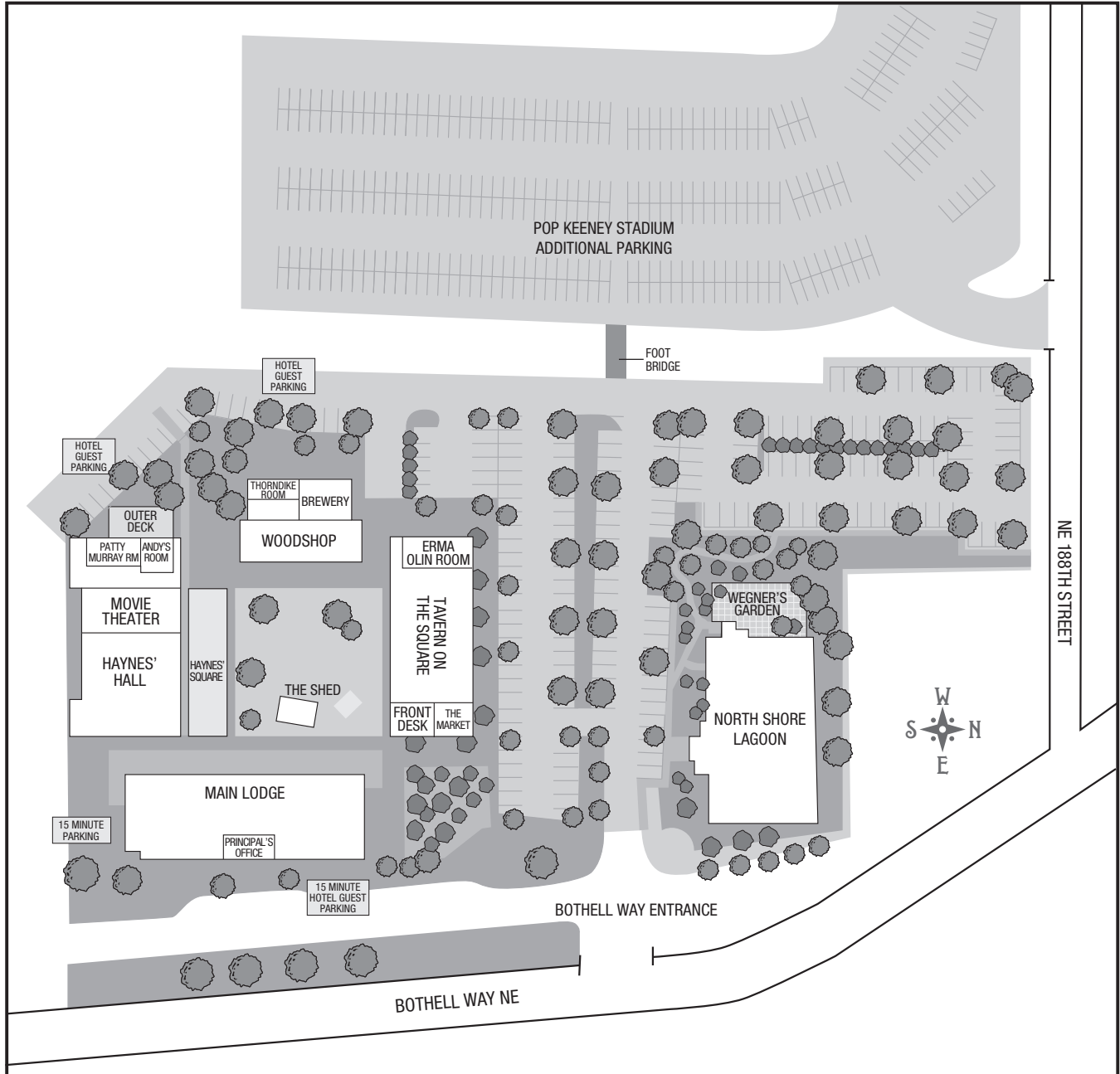
MEETING ROOM SPECIFICATIONS

	Maximum Number of Guests per Set-up Style					
	Buffet 60-inch Round Tables	Reception	Classroom	Theater	Conference Square	Conference U-Shape
Haynes' Hall (Booked in conjunction with Haynes' Square June 1 - October 15)	285	600 (STANDING)	300	550	122	122
Patty Murray Room	32	40 (STANDING)	30	40	16	16
Andy's Room	N/A	25 (STANDING) 20 (SEATED)	N/A	N/A	12 (AT TABLE)	N/A
Wegner's Garden	100	100	N/A	100	N/A	N/A
Erma Olin Room	Seats 20 guests with pub-style seating					
Thorndike Community Room*	35	35	N/A	N/A	N/A	

Please speak with a sales coordinator if you have questions about capacity.

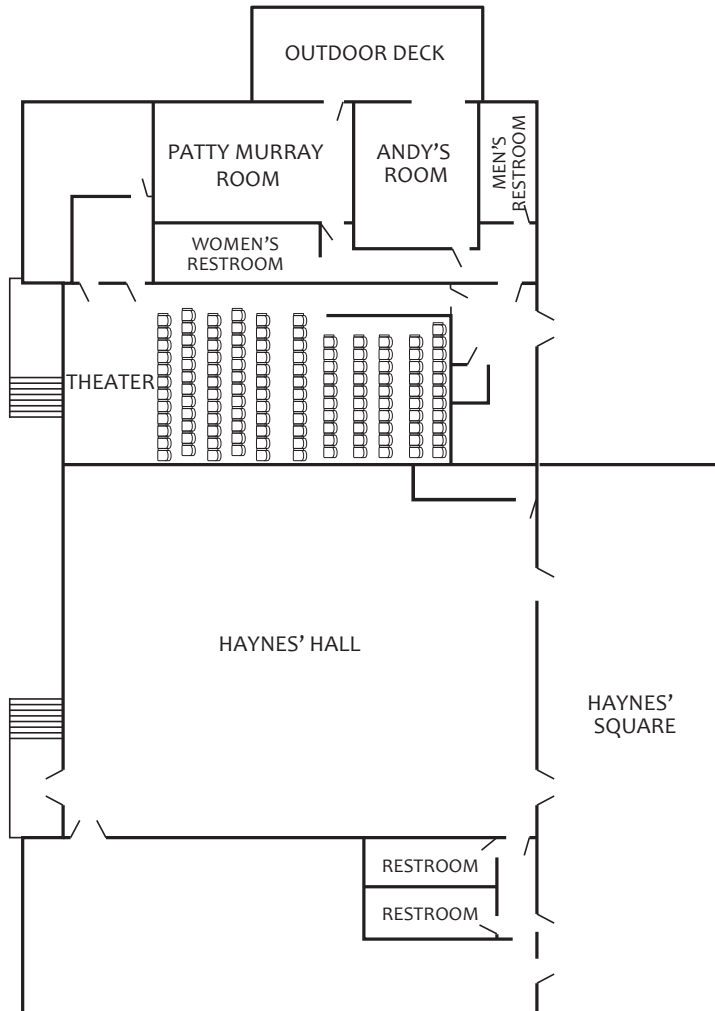
*Available only for residents of Bothell.

PROPERTY MAP



The Anderson School has limited complimentary parking. If our lot is full, hotel guests and patrons are welcome to park at the Pop Keeney Stadium located west of our parking lot, if there is not a sporting event at that time.
(Entrance to this overflow parking lot is off NE 188th St.).

EVENT SPACES



HAYNES' HALL

Located in the old gym, our largest space, Haynes' Hall, is 4300 square feet and can accommodate up to 285 guests seated and up to 600 for an event such as live music.

Capacity up to 600 guests.

HAYNES' SQUARE

Named for an early farming family in the acres nearby, this outdoor venue is available in conjunction with Haynes' Hall from June 1 - October 15.

PATTY MURRAY ROOM

Named for this Bothell native, a daughter of a Bothell merchant, Patty Murray became the first female U.S. Senator from Washington state in 1993. This Room is our second-largest event space at 608 square feet, and opens onto a deck shared with the adjacent private event space.

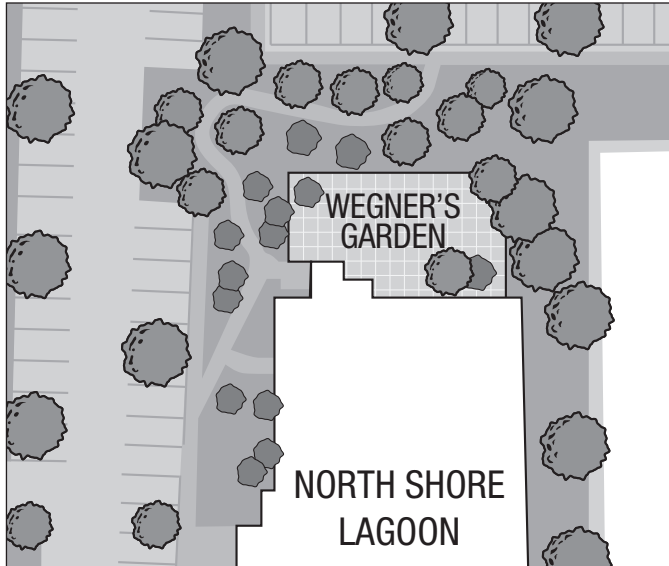
Capacity up to 40 guests.

ANDY'S ROOM

Named for one of Bothell's first settlers, Andy's Room is 460 square feet and is set up with comfortable lounge furniture and a large table. It opens onto a deck shared with the Patty Murray Room.

Capacity up to 25 guests.

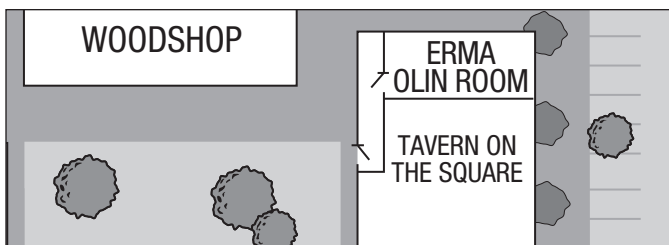
EVENT SPACES *(continued)*



WEGNER'S GARDEN

Werner's Garden is located on the west side of the pool building and is a total of 1300 square feet. This space is entirely outdoors.

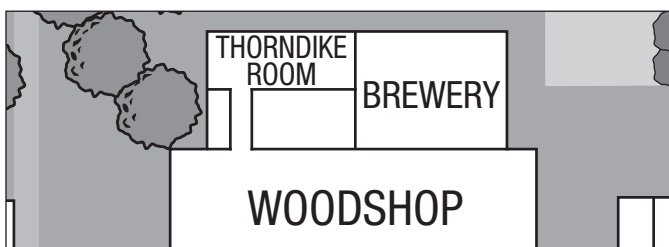
Capacity up to 100 guests.



ERMA OLIN ROOM

Just off the Tavern on the Square, this room has pub-style seating, a wall of windows and a TV.

Capacity up to 20 guests.



THORNDIKE COMMUNITY ROOM

You must be a Bothell resident to book this room. Booking is handled through the City of Bothell at (425) 806-6760. Full information packet and reservation form available online at mcmenamins.com. Catering for this space available through McMenamins.

Capacity up to 35 guests